





# The Hoxton<sup>✓</sup> ✓ Shoreditch

The Hoxton, Shoreditch, 81 Great Eastern St, London, EC2A 3HU

---

Just like our doors, our minds are open too. We turn empty car parks into hotels, reimagine old buildings that have interesting stories, and breathe life into new ones. Our hotels are inspired by the streets and scenes that surround them, and each one is an authentic reflection of its neighbourhood.

It all started with The Hoxton, Shoreditch back in 2006. Holborn was next in 2014, followed by Amsterdam in 2015, and Paris arrived in 2017 in all its grandeur. Williamsburg and Portland opened in 2018. Chicago was the first opening of 2019, with Southwark and Downtown LA following later in the year.

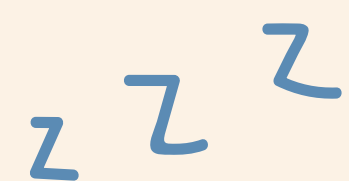
210 rooms	1 restaurant & bar with a courtyard and a rooftop restaurant with terrace	7 meeting & event spaces
-----------	---	--------------------------

the hoxton



The Hoxton, Shoreditch  
81 Great Eastern St, London, EC2A 3HU





## 210 rooms

From 12 - 25 sqm2, our Shoebox, Cosy and Roomy rooms are the perfect fit for any stay. We also have some specially designed concept rooms, each with a unique look and feel.

## Hosting a meeting or party?

The Apartment, our unique meetings and events space, offers seven individually designed rooms all centered around our fully-stocked all-you-can-eat Pantry. When booked together they can hold gatherings for up to 65 seated and 250 for a standing reception.



## No rip-off policy

Our rooms have everything you need and nothing you don't. Everyone gets water, fresh milk, coffee and tea, and a fridge that's yours to stock with snacks and drinks from our Hox Shop, where you'll find beers, wines and soft drinks at supermarket prices.

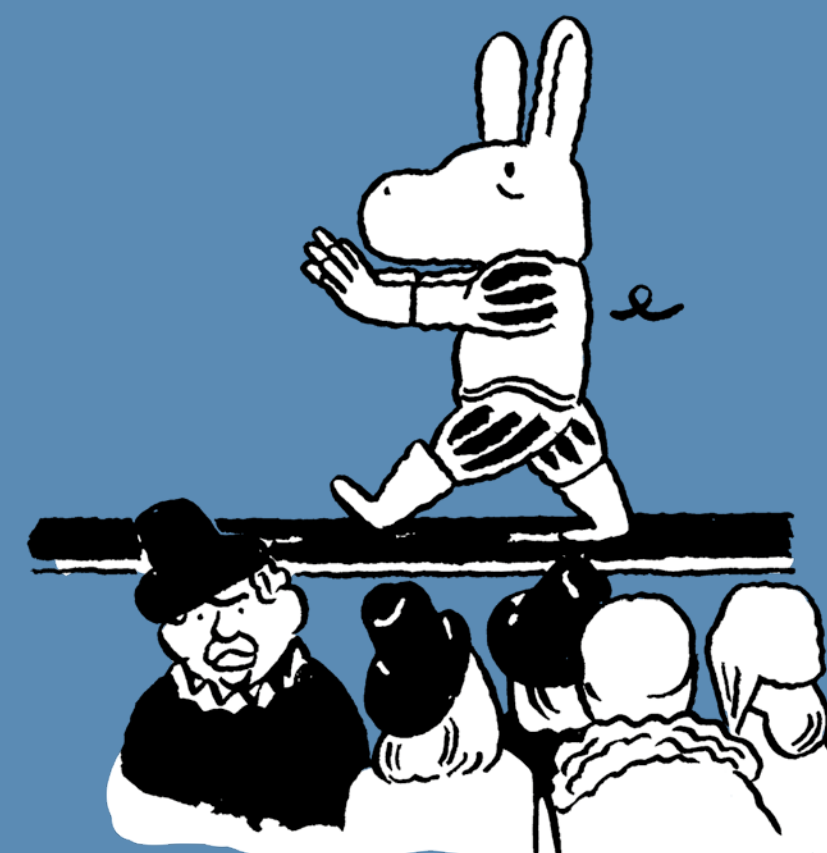
## Feelin' peckish?

Our all-day restaurant Hoxton Grill serves breakfast, lunch, dinner, weekend brunch, and Sunday roasts with an enclosed courtyard space, and buzzy bar to kick back in the evenings. Feeling fancy? Our rooftop restaurant offers a modern approach to Peruvian cooking, with an exciting menu of ceviche, small plates, sharing dishes, natural wine and cocktails.



### *The Neighbourhood*

The creative epicentre of East London if you will, Shoreditch is very much alive and kicking, buzzing with creative energy, graffiti, independent boutiques, great bars, eateries, and street food. What were once industrial buildings have been turned into covetable flats and slick offices. Shoreditch is where it's happening.



### *Did you know?*

London's first theatres were built right here in Shoreditch, with Shakespeare spending much of his time writing and acting around these parts too.

### *How to get here*

Old Street Station	4 minutes
Liverpool Street Station	10 minutes
LCY Airport	30 minutes

### *Want to know more?*

[sales.shoreditch@thehox.com](mailto:sales.shoreditch@thehox.com)  
0207 550 1000



# The Hox family

2006



*Shoreditch, London*

Birth of the Hoxton Hotels, right in the heart of East London.

2014



*Holborn, London*

Former BT Exchange building converted into second London Hoxton.

2016



*Amsterdam*

Our first Hoxton outside of London on the Herengracht Canal.

2017



*Paris*

Located in Paris's 2nd Arrondissement

2018



*Williamsburg, NYC*

Situated in Brooklyn's creative heart, Williamsburg.



*Portland*

In the Old Town Chinatown District.

2019



*Chicago*

Situated in the Fulton Market District.



*Southwark, London*

Our third London Hoxton a stone's throw from South Bank.



*Downtown LA*

A historic Broadway building located in Downtown LA.

2021



*Rome*

Our first Hoxton in Italy, situated in the leafy neighbourhood of Parioli.

2022



*Poblenou*

Bringing the Hox experience to Barcelona, in a popular beachside neighbourhood.



*Shepherd's Bush, London*

Our fourth London Hoxton goes West, as the gateway to eclectic W12.

2023



*Charlottenburg*

Our first foray to Germany: an art nouveau-style hotspot in glam Charlottenburg.



*Brussels*

The Hox's Belgium debut, set in buzzing Saint-Josse-ten-Noord.



*Lloyd Amsterdam*

Our second Amsterdam home, located in the innovative Eastern Docklands – with a windmill next door.





What we do



# More than a hotel

The Hoxton has never just been about offering a bed for the night. We want to be more than that, providing a vibrant and welcoming place where guests can hangout alongside the locals and immerse themselves in the neighbourhood.

## *Bringing the Outside In*

*From the locally sourced art on our walls, bookshelves curated by Hox Friends, and Best Of collaborations; to our programme of monthly events unique to each location.*

## *Hox Shop*

From Best Of to Blank, we've created and curated lovely products exclusively for The Hoxton. Plus each room has a mini fridge to stock with products from our Hox Shop at supermarket prices.

## *Our Design*

All our spaces are vibrant, cosy, welcoming, and inspired by our local neighbourhoods.

## *No rip-off policy*

Our rooms have everything you need and nothing you don't. Everyone gets water, fresh milk, coffee and tea, and a fridge that's yours to stock with snacks and drinks from our Hox Shop, where you'll find beers, wines and soft drinks at super-market prices.

## *Meet, Eat, Party, Repeat*

Our events space, The Apartment, is there to make your own. Day or night, take over the whole space or just one room.

## *Working From\_*

A new dedicated workspace by The Hoxton – inspired by all the folk working from our lobbies since 2006.







A place to hang Lou Lobb

the hoxton

The Hoxton, Shoreditch  
81 Great Eastern St, London, EC2A 3HU



- Get comfy -  
*210 bedrooms*

the hoxton

The Hoxton, Shoreditch  
81 Great Eastern St, London, EC2A 3HU



Get comfy



the hoxton



We've got you covered for your best night's sleep with comfy mattresses and black out blinds to help you drop off, and you'll find our very own bathroom amenities range, Blank, to get you squeaky clean the next morning.

The Hoxton, Shoreditch  
81 Great Eastern St, London, EC2A 3HU



# Shoebox

*Up to 2 Adults | Double Bed | 130 sq ft | 12 sq m*  
The smallest of the lot. Compact, quiet and located on a high floor.

the hoxton



The Hoxton, Shoreditch  
81 Great Eastern St, London, EC2A 3HU



Cosy



the hoxton



*Up to 2 Adults | Double Bed | 215 sq ft | 20 sq m*  
Doggy Friendly. A comfy fit for two without stepping on toes.

The Hoxton, Shoreditch  
81 Great Eastern St, London, EC2A 3HU



# Cosy Twin

*Up to 2 Adults / Two Twin Beds / 215 sq ft / 20 sq m*  
Doggy Friendly. A twin room for two with everything you need and nothing you don't.

the hoxton





Roomy



the hoxton

*Up to 2 Adults and 1 Child | King Bed | 270 sq ft | 25 sq m*  
The Biggest of the lot, great for longer stays and perfect for spreading out. Travelling with the fam? Ask to add a cot bed.

The Hoxton, Shoreditch  
81 Great Eastern St, London, EC2A 3HU



A high-angle, close-up photograph of a dining table. A hand with manicured nails and a gold watch is holding a wine glass filled with red wine. The hand is positioned over a large, round, silver tray that holds several other wine glasses, some containing white wine and others empty. The tray is set on a white tablecloth. In the background, there are small bowls of olives and nuts, and a glass of red wine. The overall atmosphere is elegant and sophisticated.

# Meetings & party time

7 rooms



# The Apartment

---

Pitch? Presentation? Party?

The Apartment is a flexible meetings and events space in all our hotels.

Individually designed spaces are made to feel like home, centered around a communal kitchen pantry that transforms into a bar after dark.





# The Pantry



the hoxton

The Hoxton, Shoreditch  
81 Great Eastern St, London, EC2A 3HU



# Library & Living room | *Max peeps 65*









Living room | *Max peeps 30*





# The Studies



the hoxton



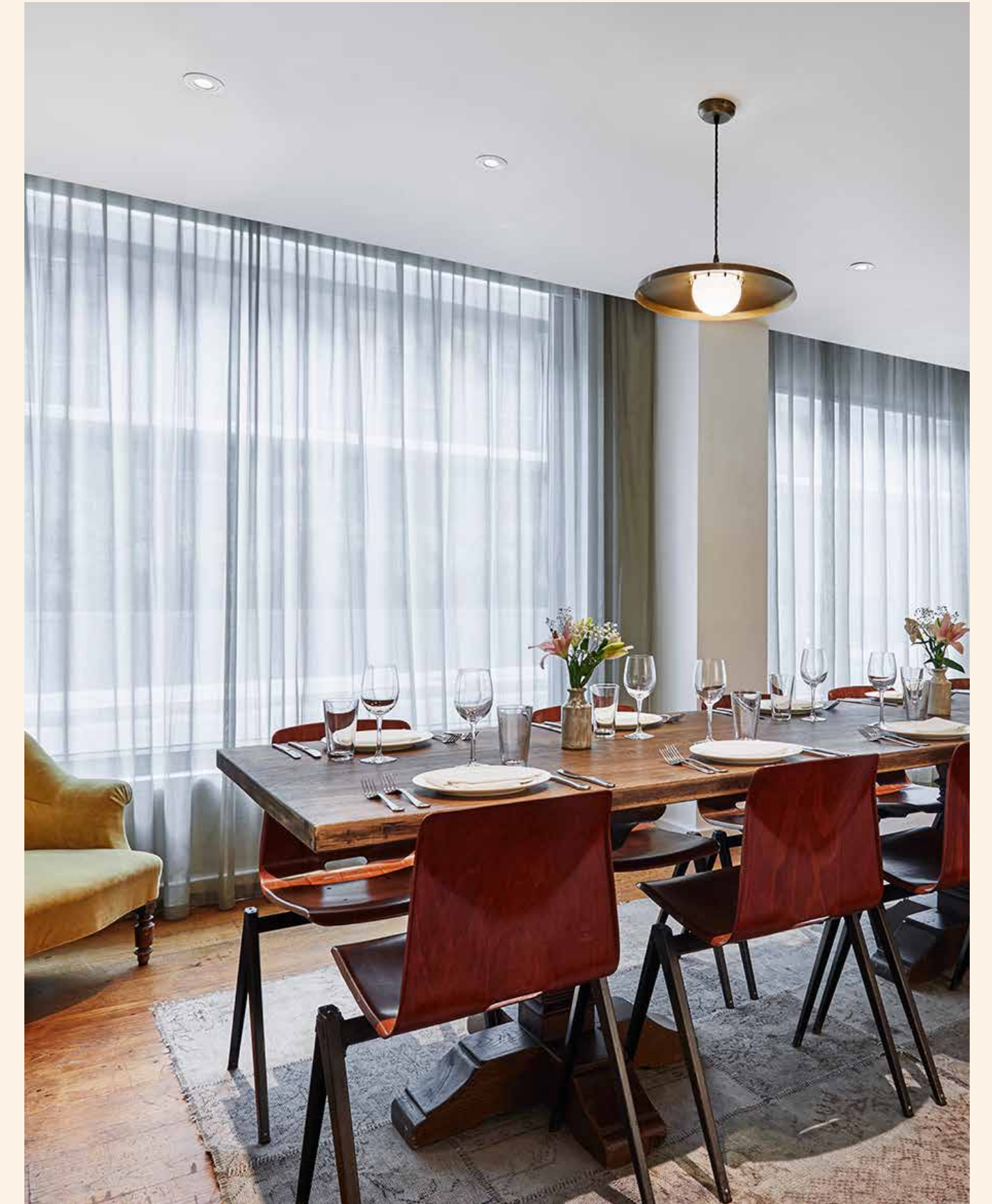
The Hoxton, Shoreditch  
81 Great Eastern St, London, EC2A 3HU



Dining room | *Max peeps 20*



the hoxton



The Hoxton, Shoreditch  
81 Great Eastern St, London, EC2A 3HU



Playroom | *Max peeps 10*



the hoxton

The Hoxton, Shoreditch  
81 Great Eastern St, London, EC2A 3HU



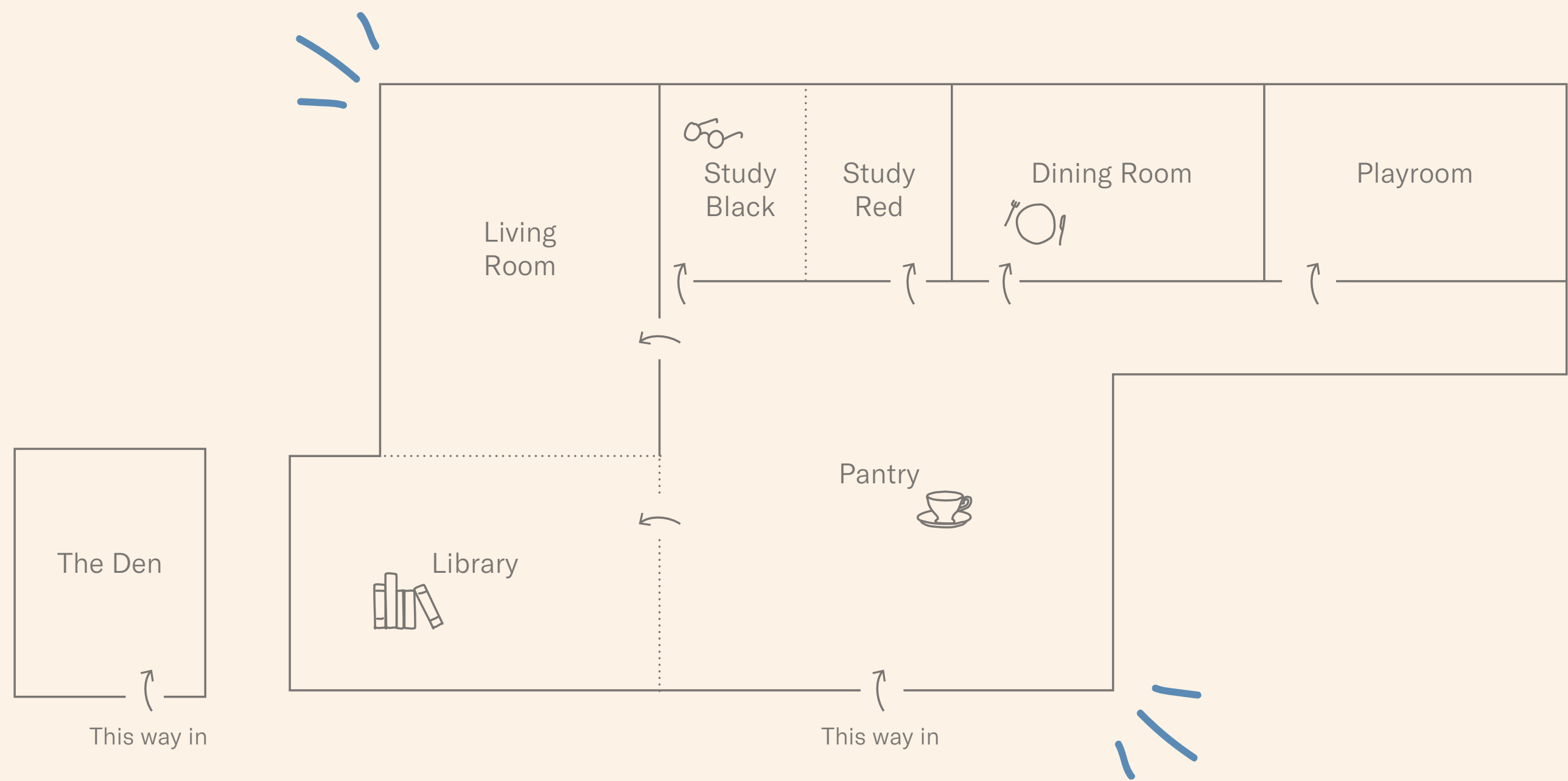
The Den | *Max peeps 10*

the hoxton

The Hoxton, Shoreditch  
81 Great Eastern St, London, EC2A 3HU



# The Apartment | 7 rooms



Room	DIMS (SQM2)	Boardroom	Theatre	Cabaret	Casual
Library	38.5	20	25	16	14
Living Room	45.9	20	30	20	20
Library + Living Room	84.4	40	65	42	30
Study Red	10	6	—	—	10
Study Black	10	6	—	—	10
Study Red + Study Black	12	12	15	—	12
Dining Room	15	14	20	14	15
Playroom	0	10	—	—	8
The Den	—	12	—	—	—
The Apartment	152.2	—	—	—	250

Want to know more?  
events.shoreditch@thehox.com  
0207 550 1020



The Courtyard | Max peeps 100

the hoxton

The Hoxton, Shoreditch  
81 Great Eastern St, London, EC2A 3HU



A wide-angle photograph of a modern, sunlit interior space, likely a restaurant or lounge. The room features a high ceiling with a white, draped fabric canopy and exposed dark metal beams. Large windows on the right side offer a view of a city skyline. The floor is covered in terracotta tiles with a circular pattern. In the foreground, there are yellow armchairs with patterned cushions, wooden coffee tables, and a large wooden sideboard with drawers. A large, leafy green plant is on the left, and another is on the right. In the background, there are wooden tables and chairs, and a bar area. The overall atmosphere is warm and inviting.

Feelin' peckish?

*Llama Inn/Hoxton Grill*

the hoxton

The Hoxton, Shoreditch  
81 Great Eastern St, London, EC2A 3HU



## Llama Inn

---

Join us on the rooftop at Llama Inn, known for its freewheeling, modern approach to Peruvian cuisine. With its own entrance on Willow Street, a light-filled dining room and fully outdoor terrace offering uninterrupted views of the London skyline.





Llama Inn

the hoxton

The Hoxton, Shoreditch  
81 Great Eastern St, London, EC2A 3HU



Llama Inn



the hoxton



Llama Inn is a perfect venue for private dining and events for up to 150 people standing or 60 people seated, get in touch to find out more.

The Hoxton, Shoreditch  
81 Great Eastern St, London, EC2A 3HU



## Hoxton Grill

---

An all-day American restaurant in Shoreditch, East London – complete with cosy leather booths – serving American inspired fare, many a Hox classic, natural wine, banging cocktails and an unmissable Sunday Roast.





Hoxton Grill



the hoxton

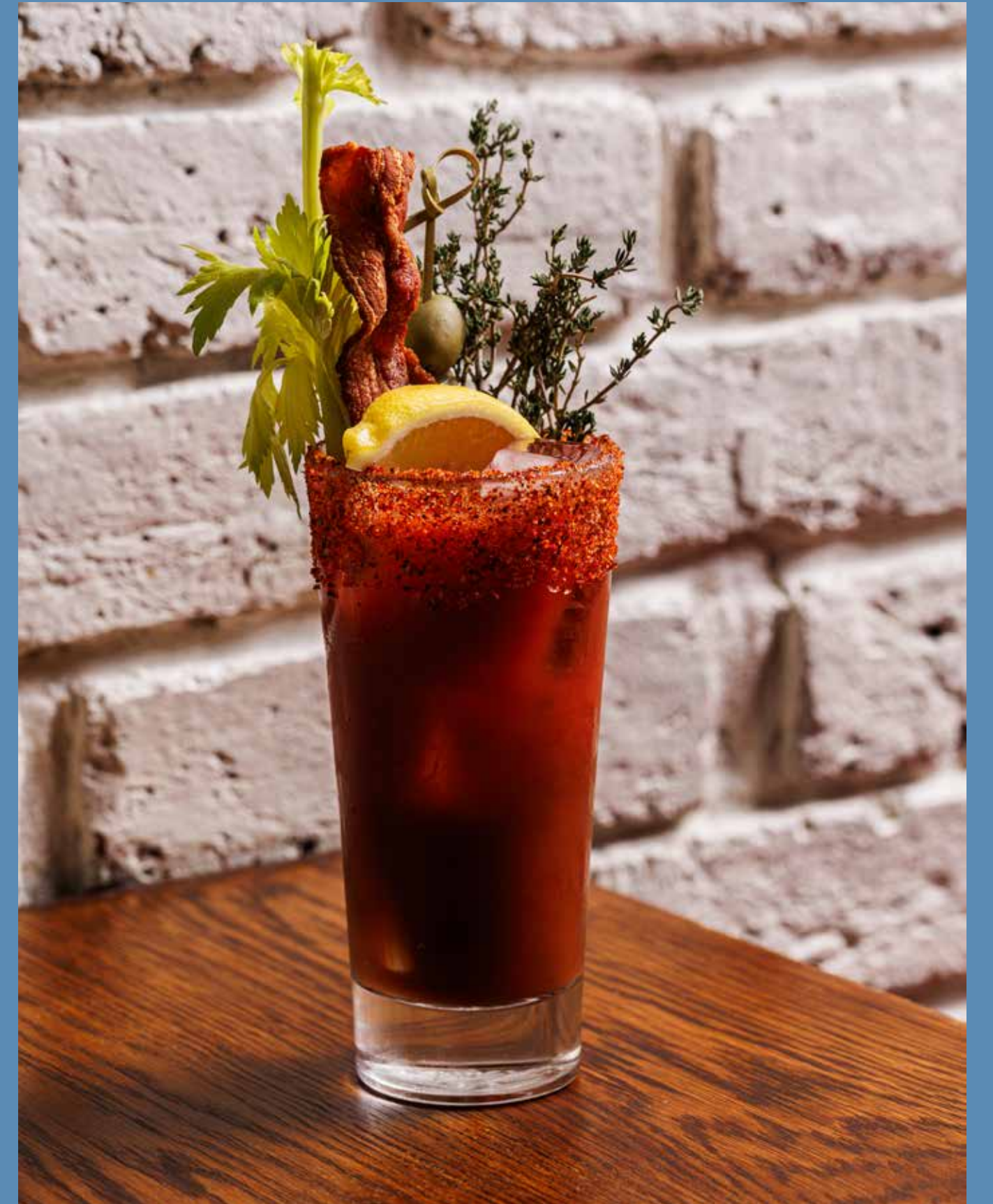
The Hoxton, Shoreditch  
81 Great Eastern St, London, EC2A 3HU



Hoxton Grill



the hoxton



The Hoxton, Shoreditch  
81 Great Eastern St, London, EC2A 3HU



# the hoxton

*Want to know more?*

[events.shoreditch@thehox.com](mailto:events.shoreditch@thehox.com)



The Hoxton, Shoreditch  
81 Great Eastern St, London, EC2A 3HU